

# Grade 7 Chemistry Collage

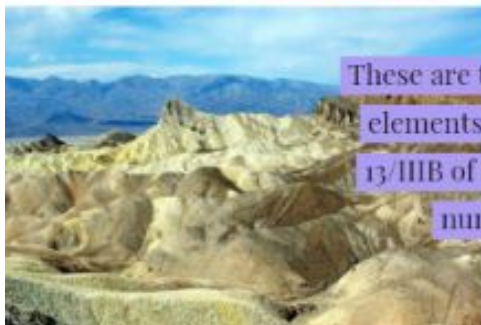


The periodic table is a  
table of elements, arranged  
in order of atomic number.

# The Periodic Table

My favourite element of the  
periodic table is Ga (gallium)  
because I love the way it  
sounds

These are the first two  
elements in section  
13/IIIB of the atomic  
number



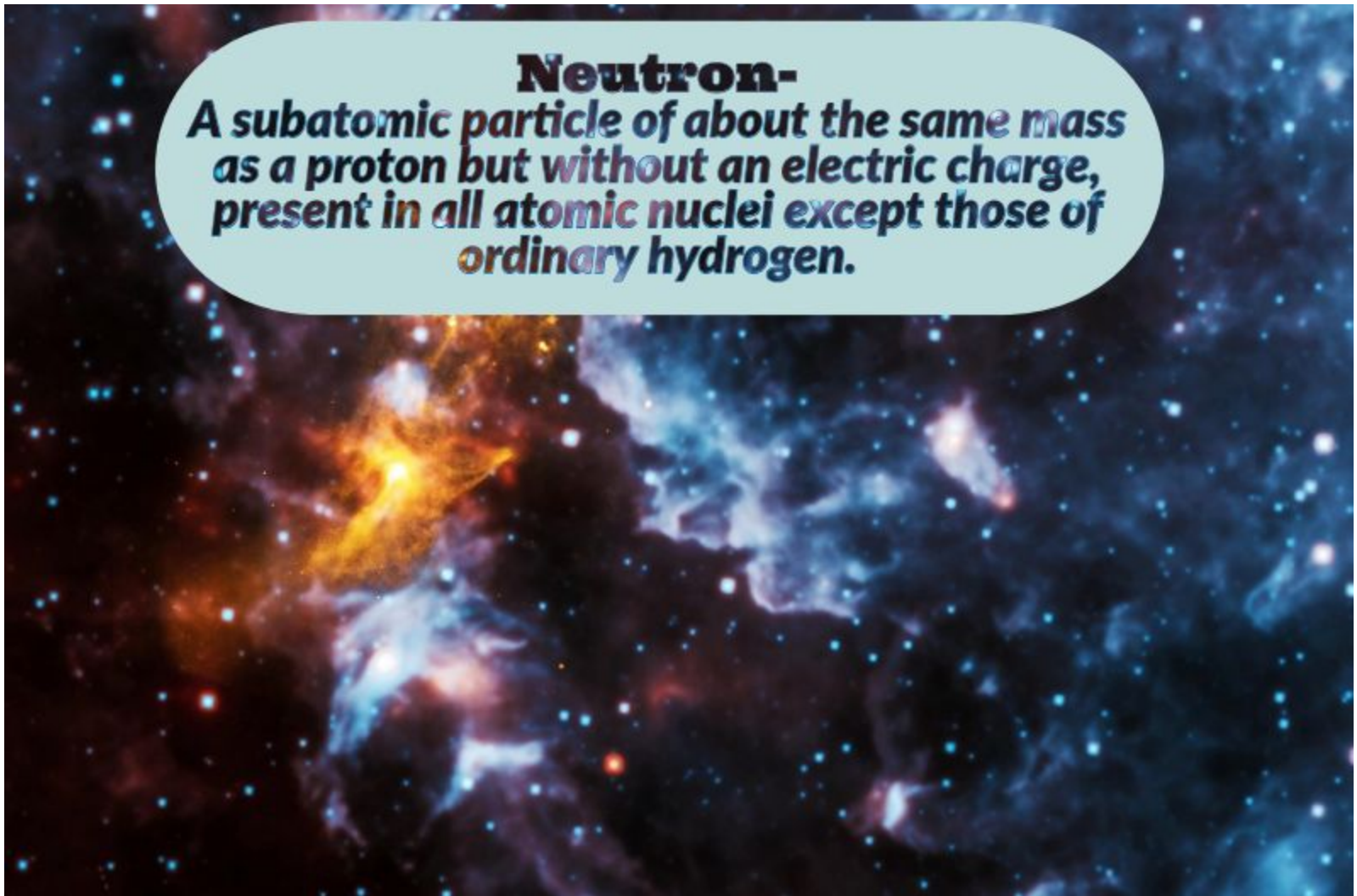


# PROTONS

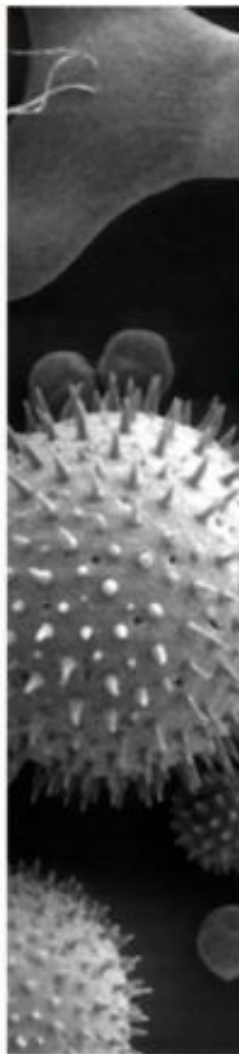
~A POSITIVE CHARGE  
FOUND IN THE NUCLEUS  
OF EVERY ATOM.

## **Neutron-**

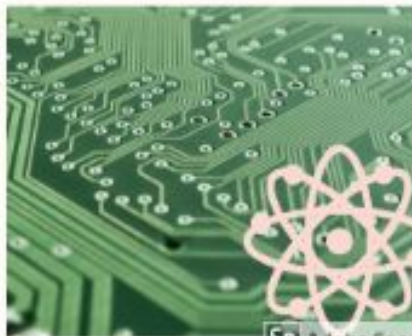
**A subatomic particle of about the same mass as a proton but without an electric charge, present in all atomic nuclei except those of ordinary hydrogen.**







**Electron: a stable subatomic particle with a charge of negative electricity, found in all atoms and acting as the primary carrier of electricity in solids.**





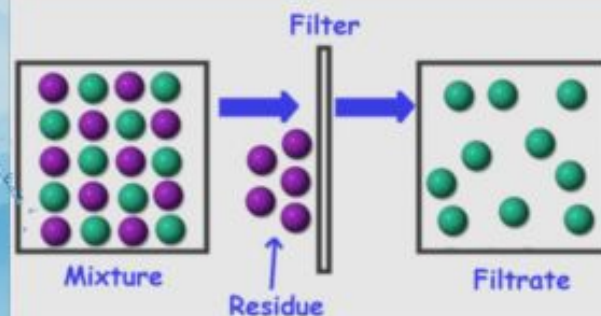
# Atomic Mass

Atomic Mass indicates  
the size of an atom.  
It is the sum of the  
mass of all the Protons,  
Neutrons, and Electrons  
in an atom.



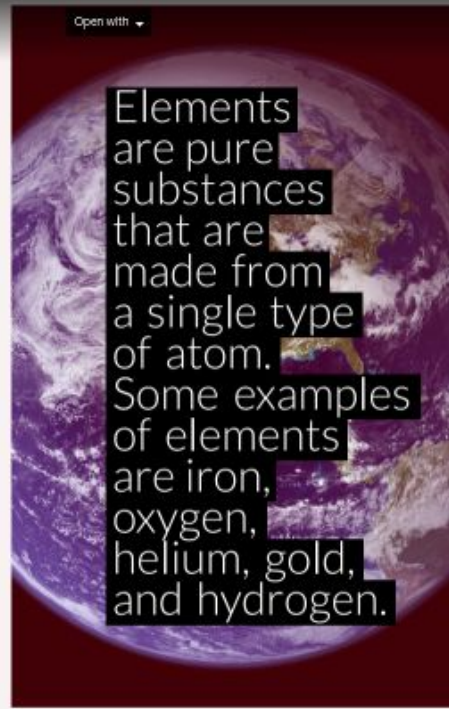
## FILTRATION

FILTRATION IS USED TO SEPARATE A MIXTURE OF SOLID PARTICLES SUSPENDED INTO AIR/WATER/SAND/SOIL.



## FILTRATE

THE MATERIAL THAT RUNS THROUGH THE FILTER IS CALLED "FILTRATE." THE PART THAT IS REMOVED IS CALLED "RESIDUE."





# Pure Substance

YOU ARE PROBABLY WONDERING WHAT IS A PURE SUBSTANCE. WELL YOU CLICKED ON THE RIGHT LINK! A PURE SUBSTANCE IS SOMETHING THAT IS MADE OUT OF ONE MATERIAL. GOLD IS A PURE SUBSTANCE BUT, TAP WATER IS NOT, BUT DISTILLED WATER OR  $H_2O$  IS A PURE SUBSTANCE. IF YOU ADD CORN SYRUP TO PURE HONEY IT WILL NOT BE PURE ANYMORE, BECAUSE IT HAD MORE THAN ONE SUBSTANCE



MECHANICAL  
MIXTURE IS TWO  
OR MORE SUBSTANCES  
MIXED TOGETHER  
BUT DON'T FORM A NEW  
SUBSTANCE.



# SOLUTION

2 SUBSTANCES  
THAT ARE EVENLY  
MIXED TOGETHER.  
ONE OF THEM  
IS CALLED THE  
SOLUTE AND  
THE OTHER IS  
THE SOLVENT.  
A SOLUTE IS  
THE SUBSTANCE  
THAT WILL  
DISSOLVE FOR.  
EX. SUGAR. THE  
SOLVENT IS THE  
ONE DOING THE  
DISSOLVING  
FOR EX. WATER.



# SOLVENT

a substance  
that  
dissolves  
other  
materials





Saturated - A solution that contains the maximum amount of solute that the solvent can dissolve at the given temperature.

